

WOOD PREPARATION

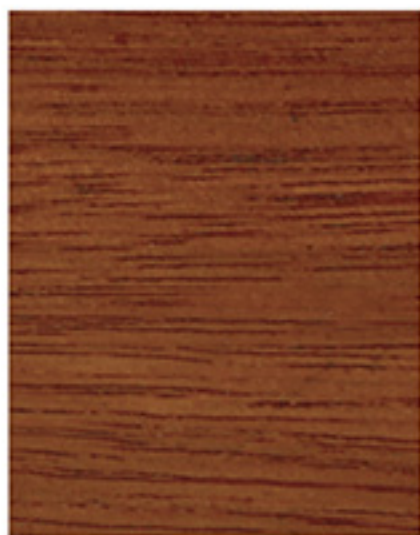
**MIDAS**  
PAINT AND SERVICE

**WOOD**

## MERANTI



KERRIE RED



TSITSIKAMMA BROWN



TZANEEN RUSTIC



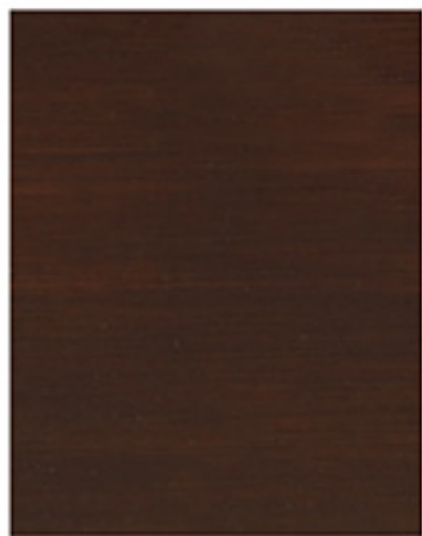
BURNT UMBER



FANCOURT IMBUIA



MIDLANDS PINE



WASHED OIL

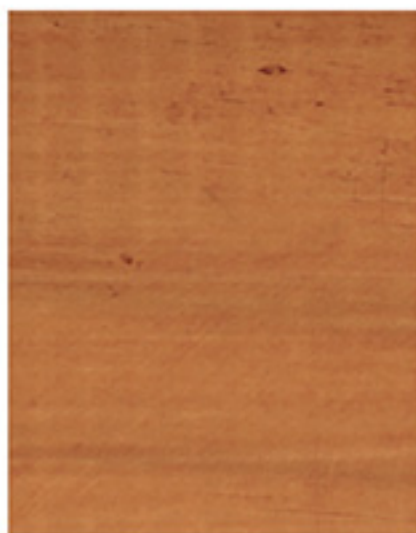


BLEACHED COCONUT

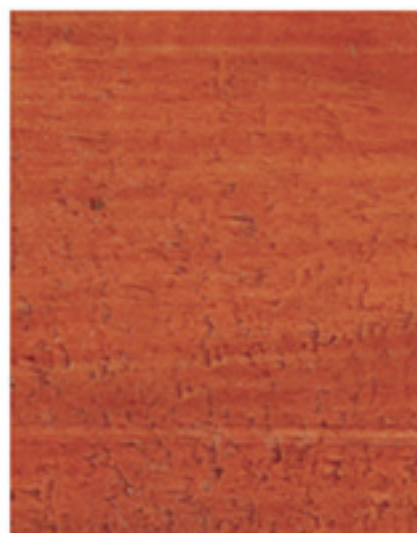
## PINE



KERRIE RED



TSITSIKAMMA BROWN



TZANEEN RUSTIC



BURNT UMBER



FANCOURT IMBUIA



MIDLANDS PINE



WASHED OIL



BLEACHED COCONUT

---

### PLEASE NOTE

ALL 5 WOODCOTE PRODUCTS ARE AVAILABLE IN THESE 16 STANDARD COLOURS. COLOURS SHOWN HERE ARE INTENDED AS A GUIDE ONLY. FOR A MORE ACCURATE REFERENCE, PLEASE REFER TO OUR INSTORE DISPLAY.

## WOOD OIL

- For all hard woods - eg. balau, teak, bluegum, jarreau
- Penetrates and nourishes timber, without leaving a film
- Wood Oil is not a varnish and will need to be applied every 6-12 months, depending on weather conditions and the structure or substrate's inclination to the sun
- Apply with brush, sponge or cloth
- For optimum protection and finish, Midas suggests a 3-coat system
- Allow 10 hours drying time between each coat



## OUTDOOR VARNISH

- For all external timber - eg. pergolas, timber decks, fences, timber homes
- Applying Outdoor Varnish will create a protective film
- Premium quality 3 year life span in harsh conditions
- Exceptional UV protection
- Apply with a quality brush
- For optimum protection and finish, Midas suggests a 3-coat system
- Allow 10 hours drying time between each coat



## INDOOR VARNISH

- For all internal timber - eg. skirtings, timber floors, wall cladding
- Premium quality 5-year life span
- Areas exposed to external sunlight through windows will be vulnerable to UV breakdown after 3 years
- Apply with a quality brush
- For optimum protection and finish, Midas suggests a 3-coat system
- Allow 10 hours drying time between each coat



## MULTI-PURPOSE VARNISH

- For all internal and external timber except floors and timber decks
- Medium grade, cost effective coating with a 2-year life span
- Apply with a quality brush
- For optimum protection and finish, Midas suggests a 3-coat system
- Allow 10 hours drying time between each coat



## WATER-BASED SEALER

- For all internal and external timber except floors and timber decks
- Low VOC, low odour wood protection
- Apply with a quality brush
- For optimum protection and finish, Midas suggests a 3-coat system
- This is a quick-dry product: allow 2-3 hours drying time



